

GASTROSTOMY TUBE



WHAT IS A GASTROSTOMY TUBE?

- Also known as G-Tube
- A Tube that is placed into the stomach
- Tube goes through opening in the body known as a "stoma".

WHAT IS IT USED FOR?

- feeding
- medications
- other fluids

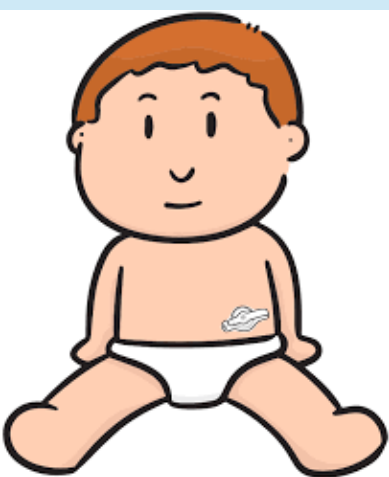


WHO MIGHT NEED IT?

- not gaining weight or not meeting growth milestones
- sucking or swallowing issues
- problems with airway or gastrointestinal tract (mouth, throat or stomach)

WHAT TO LOOK OUT FOR?

- redness
- unusual smell
- fluid leaking
- pain or sore
- may fall out

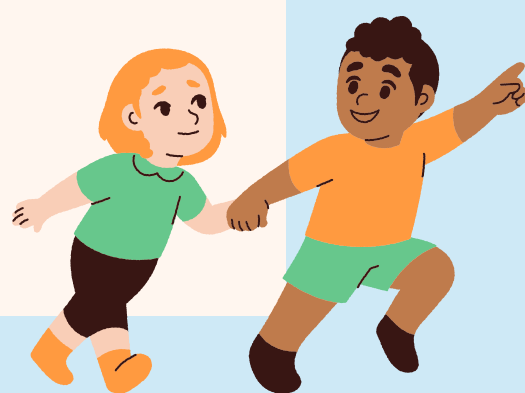


WHAT TO DO?

- inform the parent/guardian of any changes or concerns
- refer to the child's medical plan

CHILDREN WITH G-TUBES...

- may still be able to eat by mouth with a G-tube
- may or may not be permanent
- does not limit a child's ability to climb, run, swim or play sports



RESOURCES



SICK KIDS - ABOUT KIDS HEALTH

Website:

www.aboutkidshealth.ca/tubefeeding

Phone: 416-813-1500

Address: 555 University Ave, Toronto, ON



SICK KIDS- WORKSHOP

Website:

www.connectedcare.sickkids.ca/for-providers-edu

Email: connectedcare.inquiries@sickkids.ca

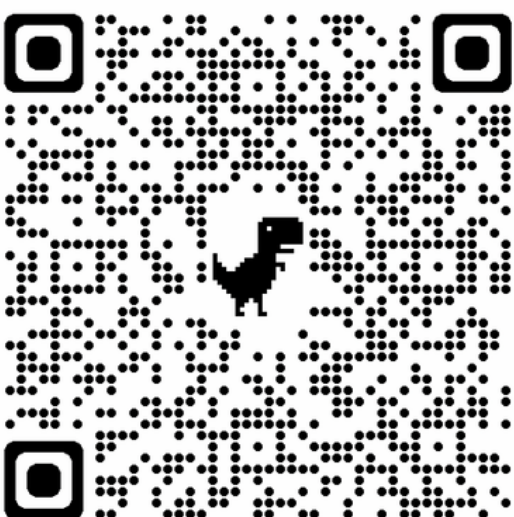


SICK KIDS- SPECIALTY FOOD SHOP

Website: www.specialtyfoodhsop.ca

Email: sfs.admin@sickkids.ca

Address: 555 University Ave, Toronto, ON



HAMILTON HEALTH SCIENCES

Website:

www.hamiltonhealthsciences.ca/wp-content/uploads/2019/08/GastrostomyTubeChild-lw.pdf

Phone: 905-521-2100



CITY WIDE TRAINING

Website: www.citywidetraining.ca

Phone: 416-675-6622

Address: 205 Humber College Blvd, Etobicoke, ON



Created by Tashauna Wesley and Andreea De Faria from the Humber-UNB BN program. No material in this pamphlet is intended to be a substitute for professional medical advice, diagnosis, or treatment. Always seek the advice of your health care provider with any questions you may have. If you have any questions, please contact: 416-435-4873